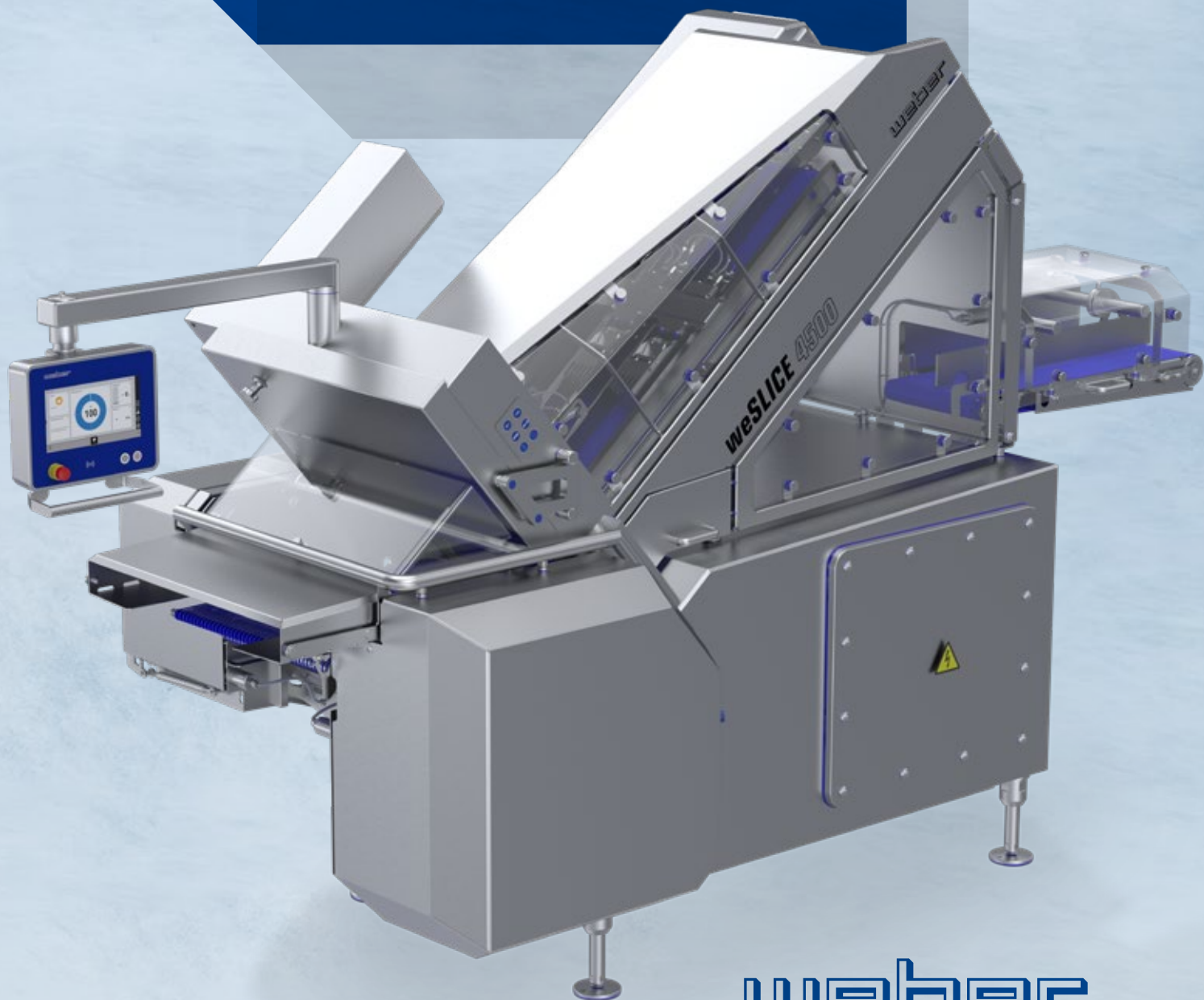


weSLICE 4000/4500

Flexible Solution
for Full-Line Suppliers



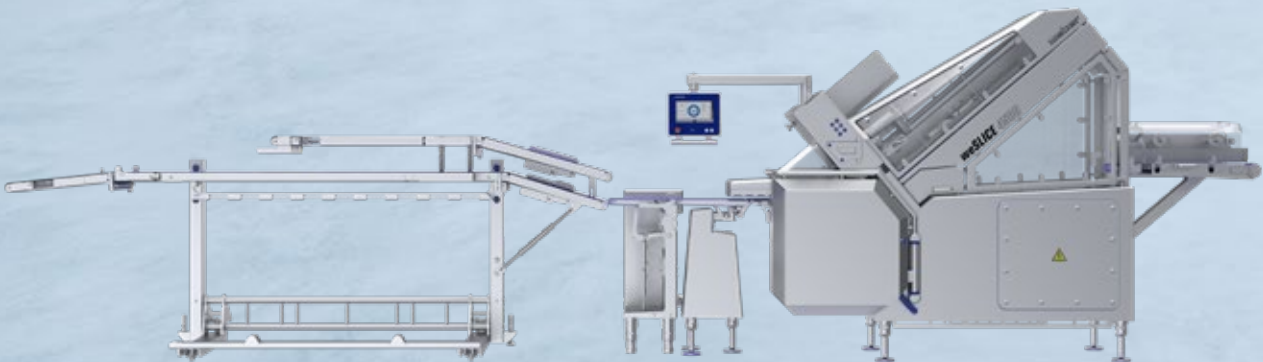
weber

Flexible. Powerful. Compact Footprint.

The weSLICE 4000 models are the perfect solution for full-range suppliers. At an average output, it offers maximum flexibility for many small-batch applications – all on a very modest footprint. Depending on the individual performance requirements, you can choose between the weSLICE 4000 or the weSLICE 4500.

The compact slicers allow the option of manual and automatic loading as required. This ensures optimized product loading and feeding – even for bulky products – and better integration in automated processes. Additionally, radical reductions in set-up times, combined with lower staff requirements, also help to minimize costs in the long term.

SLC Configuration



MCS Configuration





Perfect presentations. Great flexibility.
Increase sales with these attractive presentations.



stacked



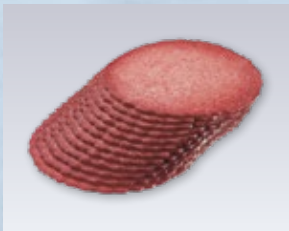
staggered stack



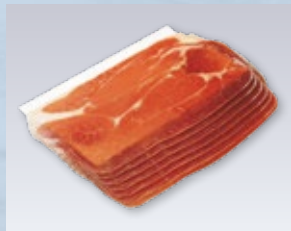
stacked with interleave



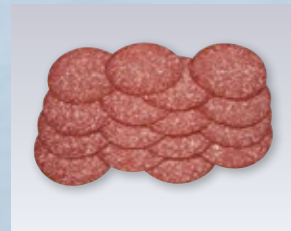
shingled stack



shingled



shingled with interleave



cross-shingled/interweaved



multi-shingled/forward-reverse shingled



endless shingled



pieces



shaved



folded



round shingle
(party tray)



oval shingle
(party tray)



overlapped
(multiple products)



portion designer

Technical specifications

	weSLICE 4000	weSLICE 4500
Slicing speed (rpm)	max. 600	max. 1500
Product throat height (mm)	120/135/150	120/135/150
Product throat width (mm)	330	330
Product length (mm)	max. 1200	max. 1200
Slicing system	Circular blade	Involute blade
Slicing thickness	0.5–50	0.5–50
Loading	auto./man.	auto./man.



Further information
and product videos

