

Weber Shuttle System

- › Individual components
- › Flexible expandable
- › Integrated buffer without transfer points
- › Hygiene design and easy cleaning



single portion shuttle



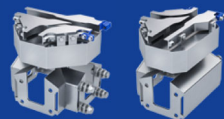
double portion shuttle



straight track 1 m



straight track 0,25 m



switches



curves



Weber Shuttle Loader (WSL)



Weber Shuttle Unloader (WSU)

Technical Data

Portion shuttle single:	270 x 270 mm
Portions/minute:	55
Portion shuttle double:	210 x 210 mm
Portions/minute:	110
Power consumption:	20 Watts/per shuttle

Options:

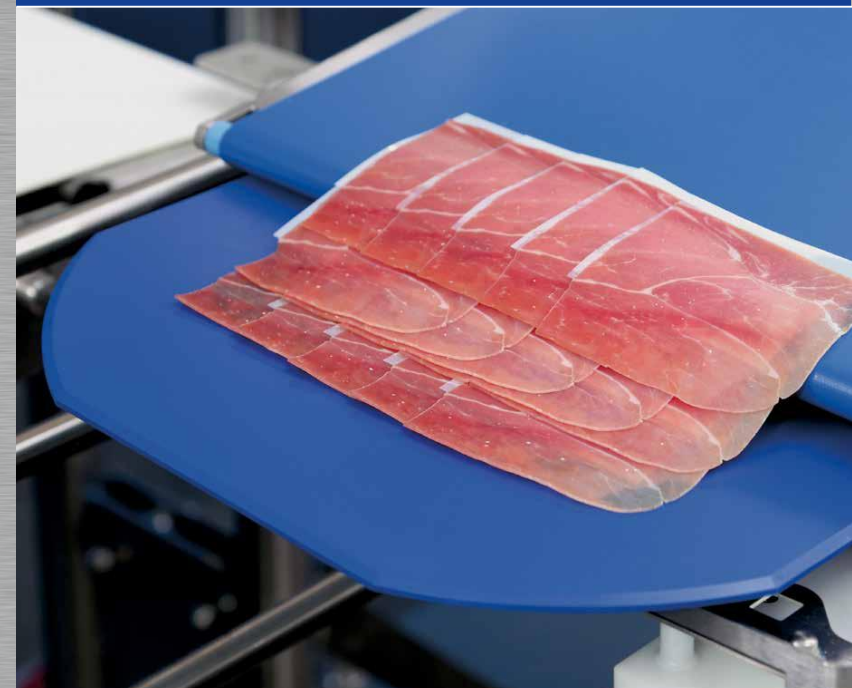
- › UVC disinfection
- › Cleaning station equipped with a scraper (placed in front of the discharge station or integrated in the pick robot) in order to remove any fines and debris of the portion shuttle

weber[®]
The High Tech Company

Weber Maschinenbau GmbH Breidenbach
Günther-Weber-Straße 3 · 35236 Breidenbach · Germany
Fon: +49 6465 918-0 · Fax: +49 6465 918-1100

Weber Maschinenbau GmbH Neubrandenburg
Feldmark 11 · 17034 Neubrandenburg · Germany
Fon: +49 395 4506-0 · Fax: +49 395 4506-1110
info@weberweb.com · www.weberweb.com

Weber Shuttle System

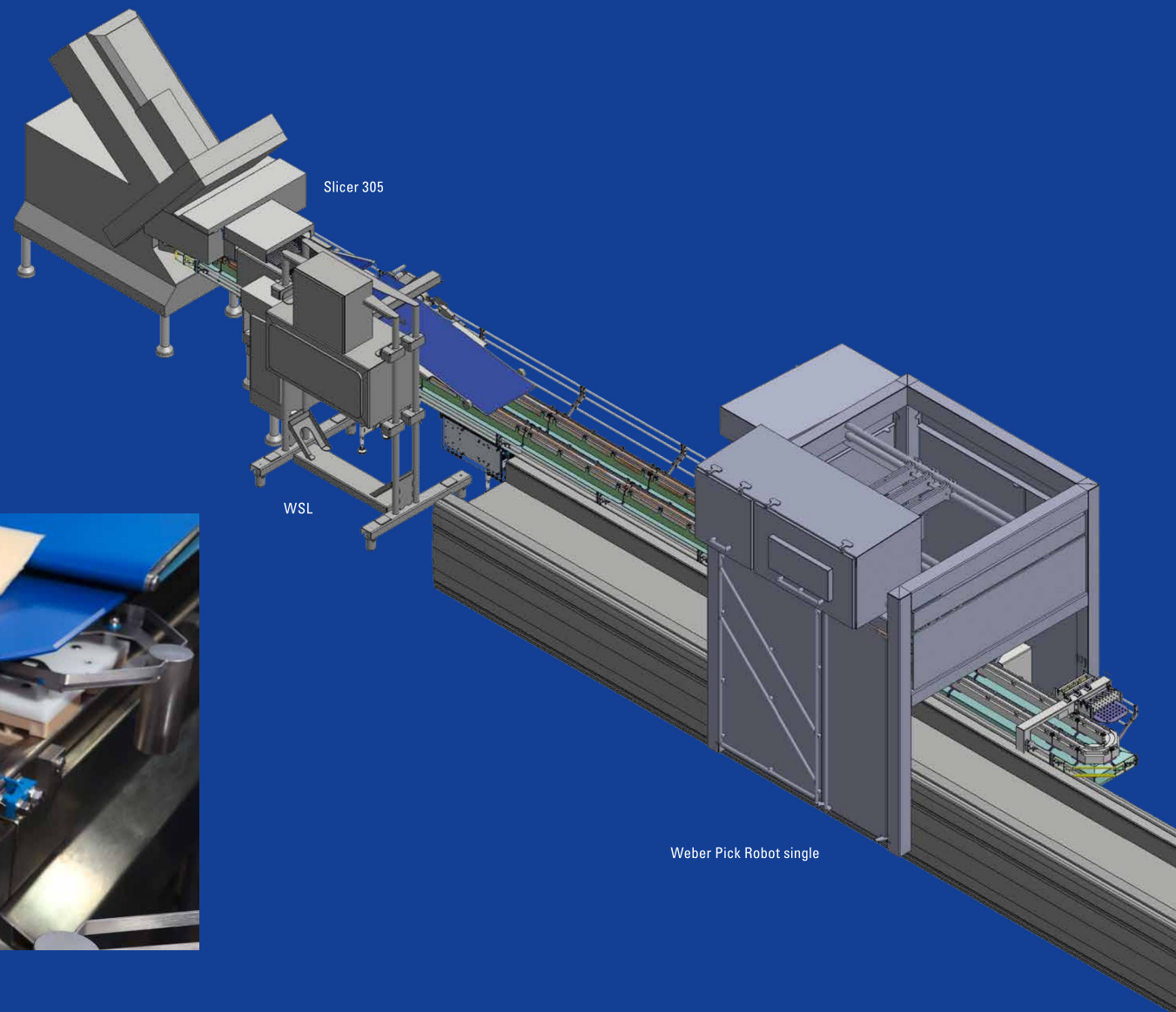


Flexible, scaleable and efficient.

weber[®]
The High Tech Company

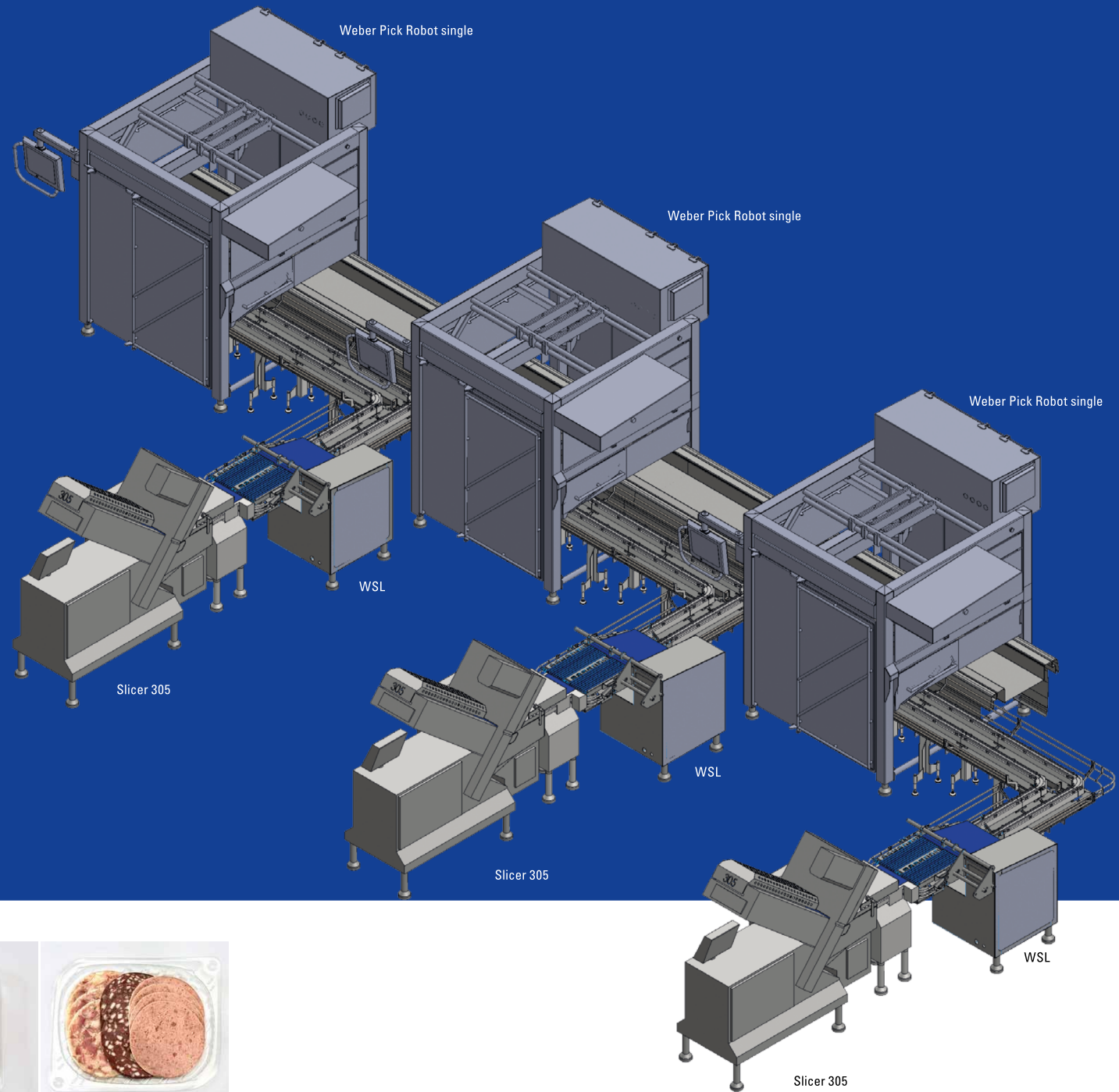
Weber Shuttle System Compact Entry Solution

- › Automation on small footprint
- › Gentle transport of single portions
- › Tailor made: Easily adaptable to constructional circumstances
- › WSS flexible expandable:
Stand-alone solution or coupled with existing Weber slicers



Weber Shuttle System network production

- › Combination of continuous and discontinuous steps:
transportation at lower and higher speeds
- › Expandable to high-end-lines
- › Single portion control
- › Modular concept with switch points and curves:
Easily adaptable to constructional circumstances
- › Creation of variety packs



Weber Shuttle System Flexible High-end-line

- › Gentle and precise transport of portions
- › Feeding of various products (variety packs, readymeals, pizza, sandwiches ...)
- › Reduced changeover times: high efficiency at lower labor costs
- › High dynamic and smooth portion transfers guarantee performance and maximal throughput
- › Excellent product safety due to nonimpact processes

