

next step in sawing

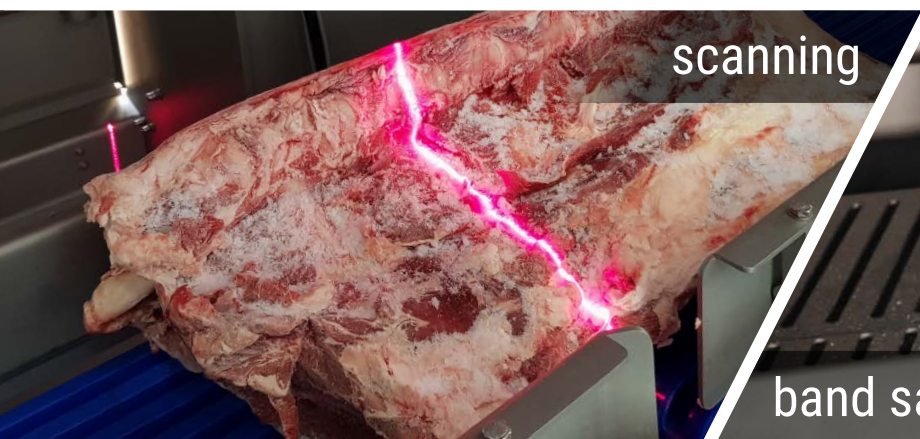
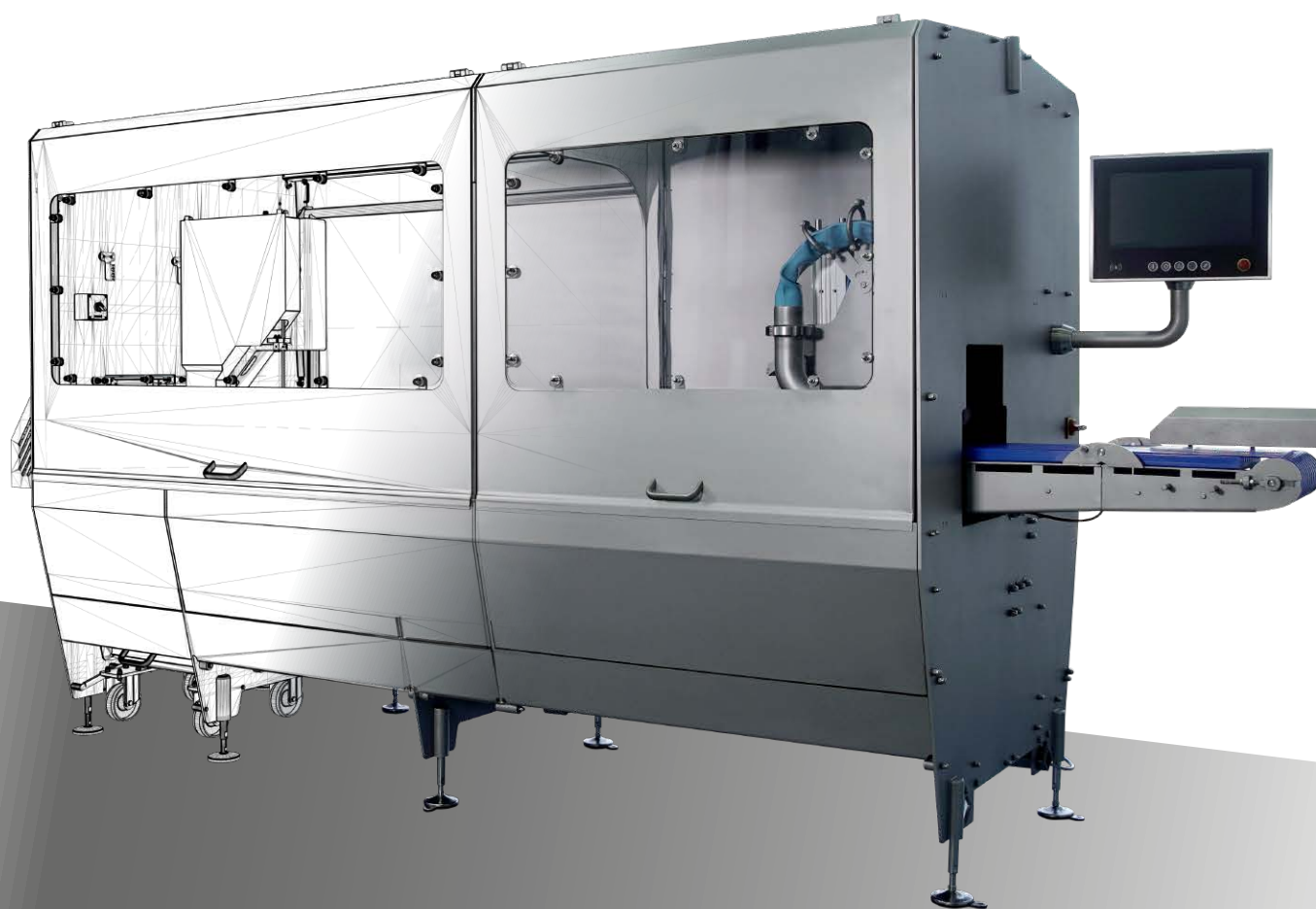
PW-Saw

precision weight

AUTOMATIC BANDSAW WITH WEIGHT CONTROL



Continuous automatic band saw that brings in a scanning system that achieves precision weight slices in accordance with weight-thickness parameters previously set.



Operational features

- ▶ For **frozen meat and fish** and for **fresh* bone-in products**
- ▶ **Continuous operation**, no need to stop in order to load the product
- ▶ **Hygienic design** for an easy cleaning process
- ▶ Perfectly adjustable cutting speed which ensures **high quality cuts**
- ▶ **Completely safe operation** (fully closed machine)
- ▶ Cutting process with **band saw**
- ▶ **Versatile programming**
- ▶ Possibility of cutting at fixed thickness
- ▶ User friendly interface

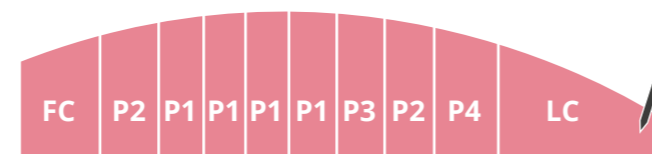
* Under previous study

Working system: PRIORITY CUTTING

The PW-Saw cuts in accordance with set parameters that are saved as what we call **priorities**.

The cut priorities are done in order of precedence (up to 4: P1, P2, P3 and P4) and are defined by objective values: maximum and minimum weights and thicknesses.

You can also set specific values for the first and last cut on the piece (FC and LC).



Optional infeed and outfeed belts

Infeed belt.

The PW-Saw's infeed belt allows pieces to accumulate, acting as a buffer for the machine and making the loading process more efficient.

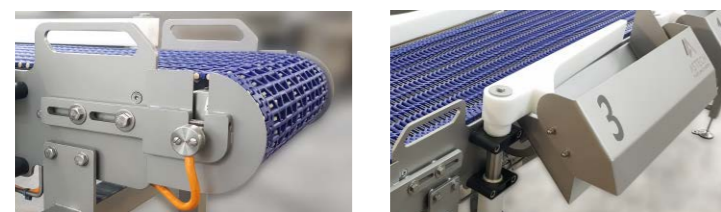
Sorting belts (outfeed).

The purpose of these belts is to sort the cuts produced by the PW-Saw according to the characteristics of each cut:

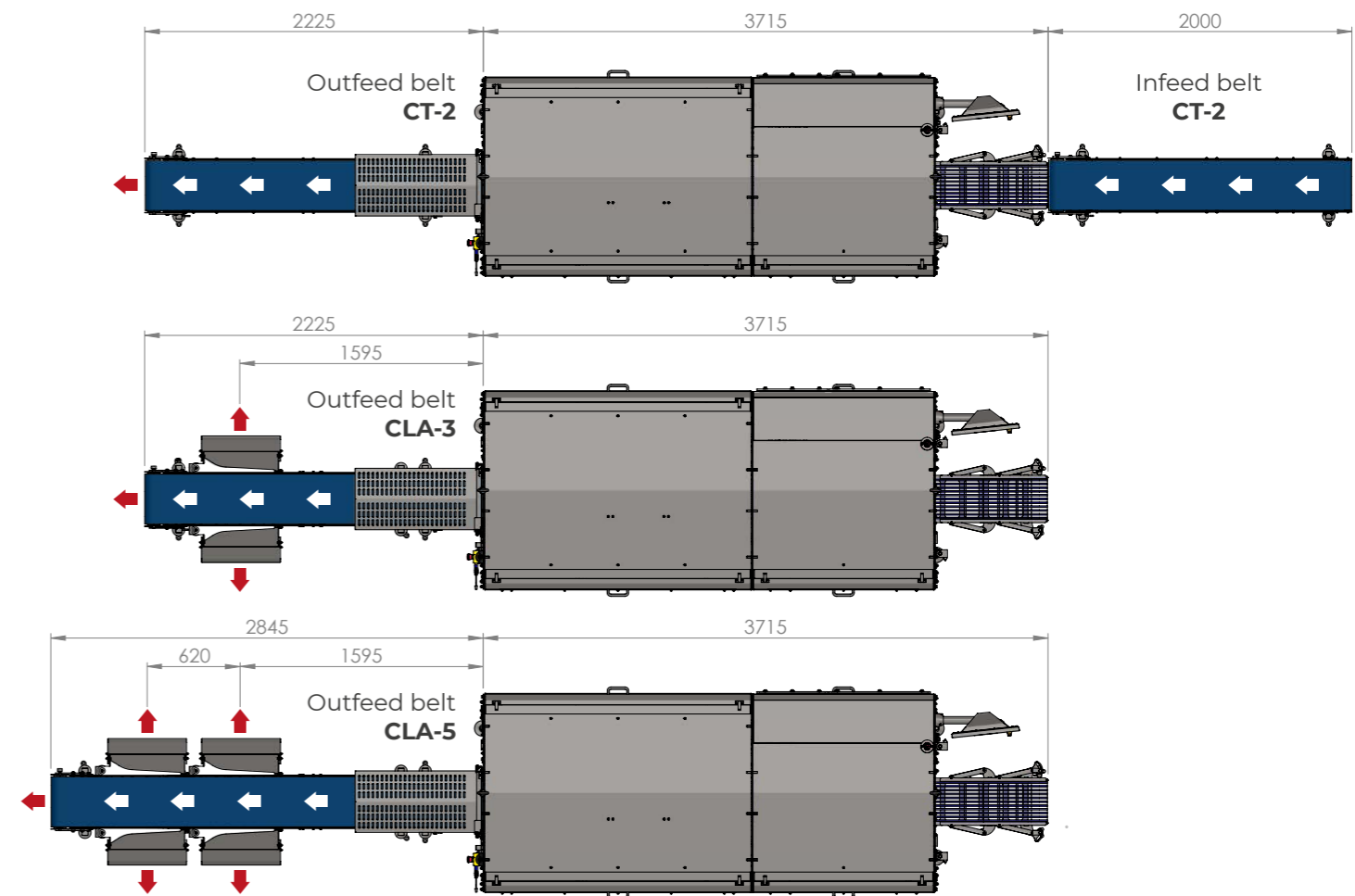
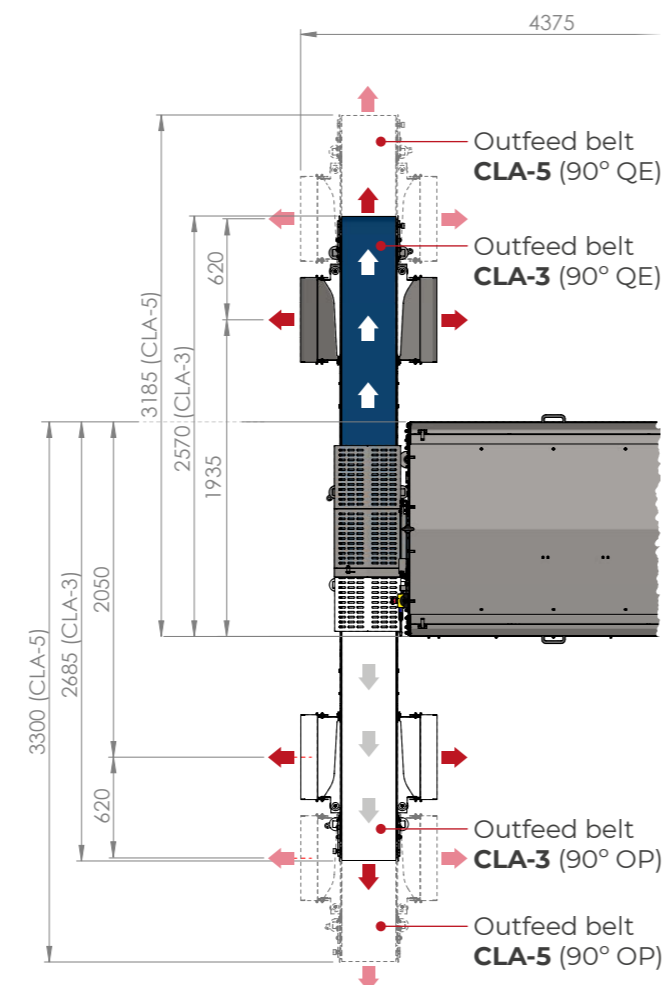
- ▶ First Cut (FC)
- ▶ Last Cut (LC)
- ▶ Priority 1 cut (P1)
- ▶ Priority 2 cut (P2)
- ▶ Priority 3 cut (P3)
- ▶ Priority 4 cut (P4)
- ▶ Cuts not matching any priority

CLA-3. Belt with 2 sorting arms + outlet (3 destinations)

CLA-5. Belt with 4 sorting arms + outlet (5 destinations)



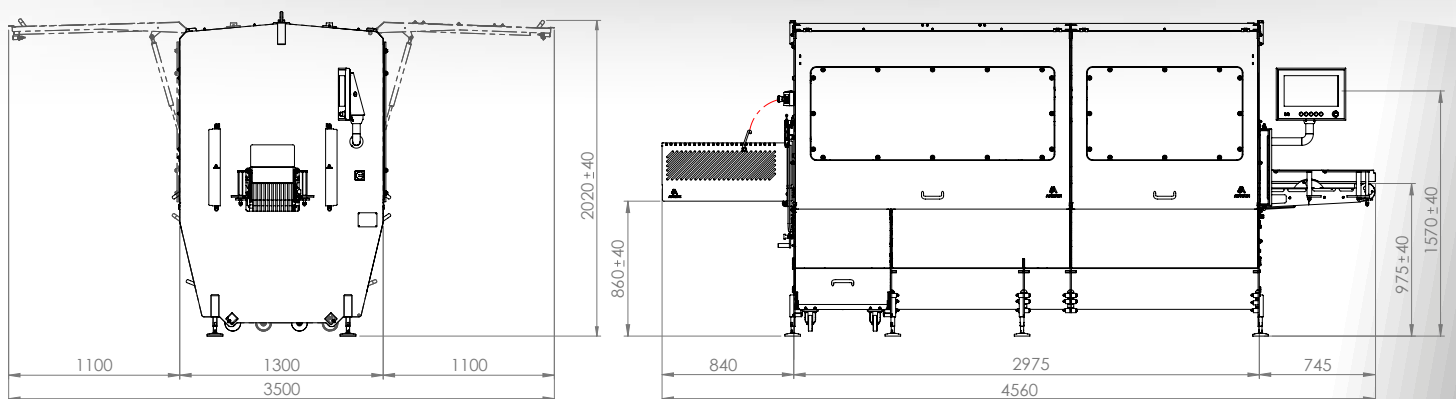
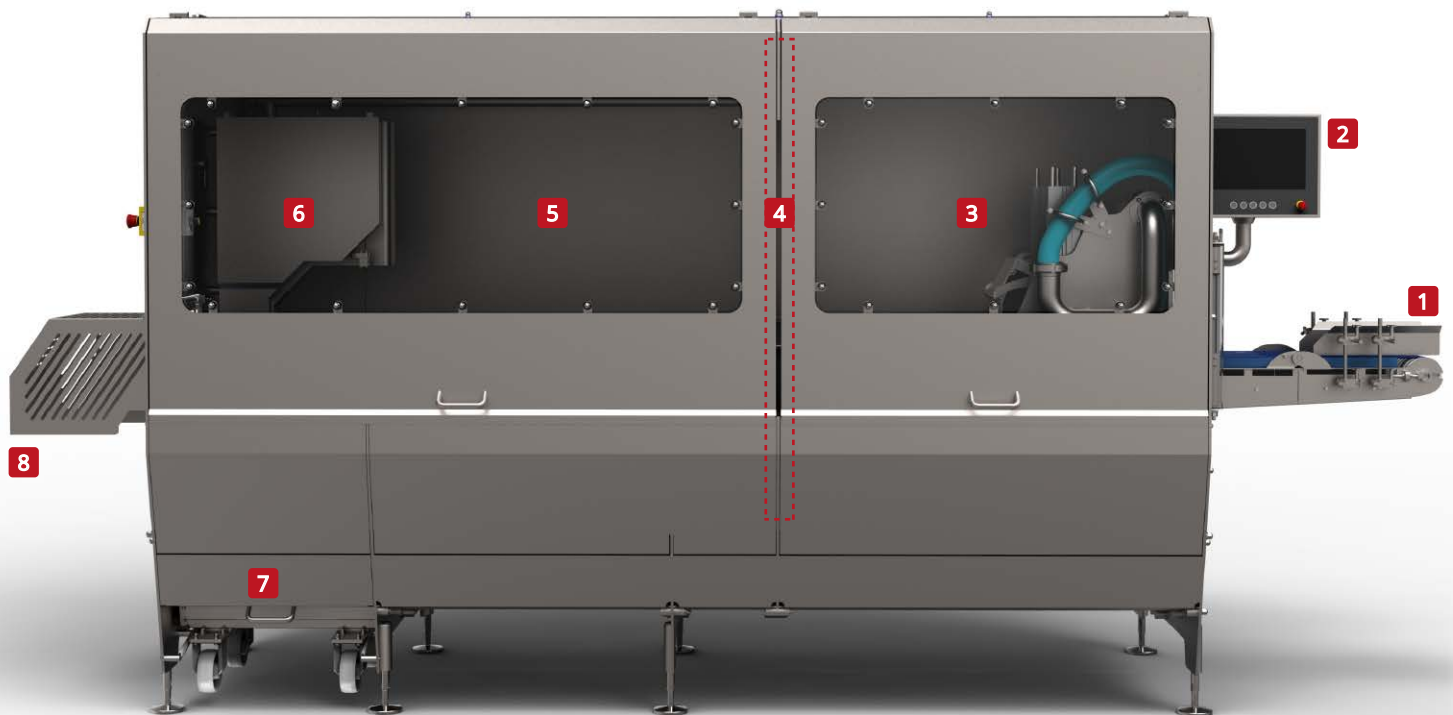
- ▶ Stainless drum motor and sprockets
- ▶ Modular transport belt with 84% open area.
- ▶ Pneumatically operated sorting blades.
- ▶ Hygienic design





PRECISION EFFICIENCY SAFETY

HIGIENE QUALITY OF THE CUT SAVING



- 1 Product inlet belt
- 2 Control touch screen
- 3 Product gripping area
- 4 Product scanning
- 5 Product cutting area
- 6 Band saw
- 7 Saw dust collection
- 8 Final product outlet

Technical features

Machine dimensions (L x W x H)
4560 x 1300 x 2050 mm

Machine width with open doors (W)
3500 mm

Max. measurements of produce (L x W x H)
700 x 250 x 250 mm

Maximum cutting thickness
250mm

Compressed air
Pressure 6 bar
(10l/compl. cycle)

Machine power
4 kW

Band saw blade
2680 x 16mm

Machine weight
2000 Kg